

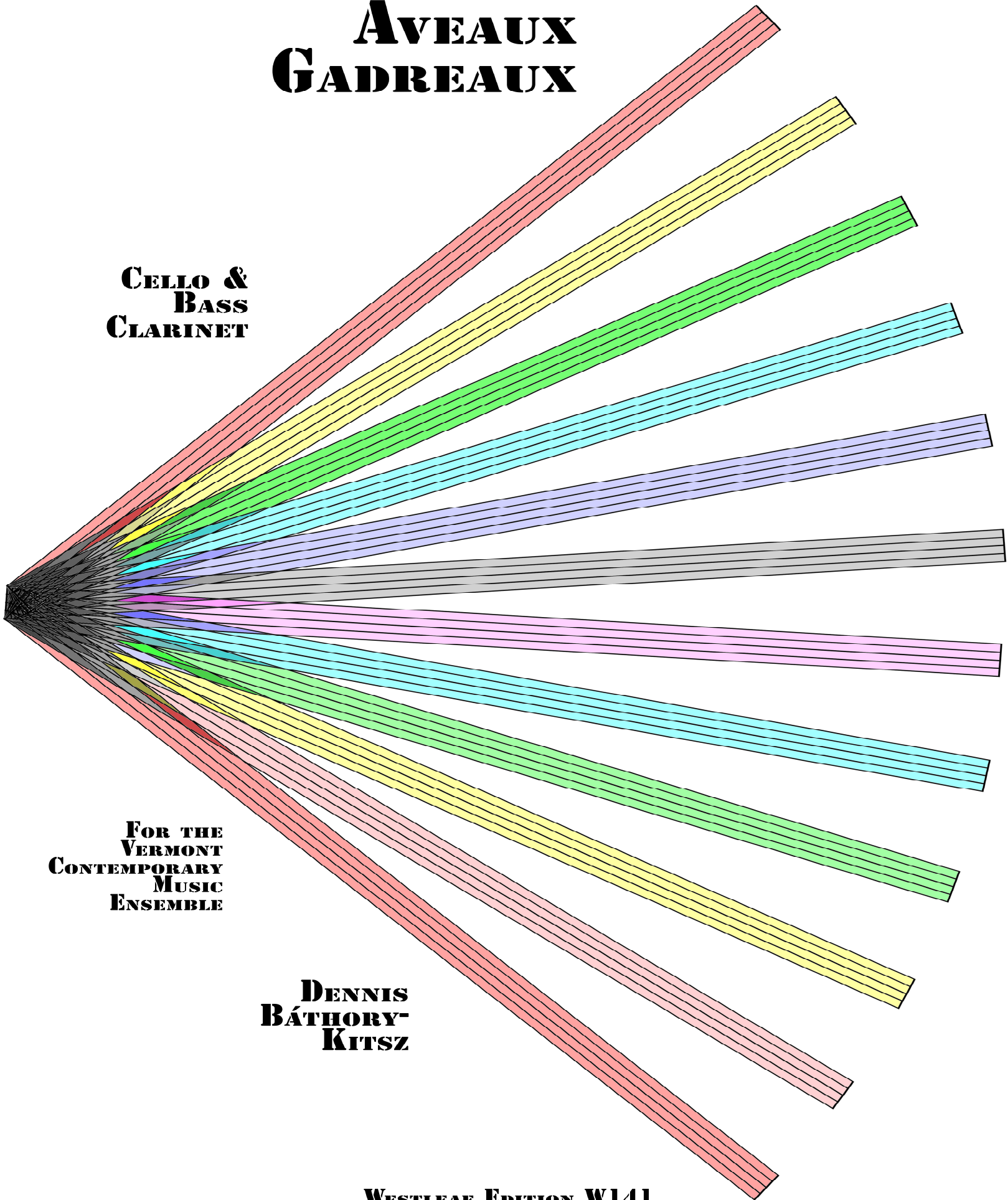
# **AVEAUX GADREAU**

**CELLO &  
BASS  
CLARINET**

**FOR THE  
VERMONT  
CONTEMPORARY  
MUSIC  
ENSEMBLE**

**DENNIS  
BÁTHORY-  
KITSZ**

**WESTLEAF EDITION W141**



# **AVEAUX GADREAUX**

FOR CELLO AND BASS CLARINET

**DENNIS BÁTHORY-KITSZ**

WESTLEAF EDITION W141

**A PALINDROMIC WORK FOR THE  
VERMONT CONTEMPORARY MUSIC ENSEMBLE**

## **ADDITIONAL INSTRUCTIONS**

**CHORALES ARE FROM J-P RAMEAU.**

### **MOVEMENT 1:**

**THIS MOVEMENT IS FAST, AND MAY BE COMPRESSED SHORTER THAN FOUR MINUTES.**

**THIS MOVEMENT MAY BE PLAYED SIMULTANEOUSLY WITH THE *MOLES* POEM.**

**THIS MOVEMENT IS JAGGED.**

**LEFT-HAND CLEFS ARE SUGGESTIONS OF RANGE.**

**RIISING SLIDES SHOULD BE INTENSE AND EXAGGERATED BUT NOT CAMPY.**

**THE INTERPRETATION OF COLOR BANDS SHOULD BE DONE JOINTLY.**

**THE INTERPRETATION OF COLOR BANDS SHOULD TAKE INTO ACCOUNT THEIR REVERSAL.**

### **MOVEMENT 2:**

**THIS MOVEMENT IS SLOW, AND MAY BE EXTENDED PAST FOUR MINUTES.**

**THIS MOVEMENT MAY BE PLAYED SIMULTANEOUSLY WITH THE *CHAMELEON* POEM.**

**THIS MOVEMENT IS ELEGANT.**

**THE ELEMENTS ARE PLAYED IN THE ORDER OF THE GREY GUIDES (N.B. 4, 5, 6).**

**CELLO PLAYS AS MANY VERTICAL NOTES AS POSSIBLE IN THE CHORALE.**

**BASS CLARINET PLAYS A CHOICE OF NOTES FROM THE CHORALE.**

**BASS CLARINET VOCAL FRY AND HUM ARE ON A NOTE CHOSEN BY THE PERFORMER.**

**CELLO INCREASES BOW PRESSURE TO CREATE CRUSH SOUND.**

**COPYRIGHT ©2014 BY DENNIS BÁTHORY-KITSZ (ASCAP). ALL RIGHTS RESERVED.**

APPROXIMATE TIME: 4 MINUTES  
**AVEAUX GADREAUX - CELLO**

**NEGATIVE IMAGE PLAYS NEARLY SUL PONT**

**PITCHES ARE ALWAYS UNSTABLE, WOBBLE/GLISS/PORT/SHAKE**

**I**

**COLOR BANDS ARE DYNAMICS, COLD/COOL/WARM/HOT**

**DUET WITH BASS CLARINET IS PRIMARY**

**DUET WITH CELLO IS PRIMARY**

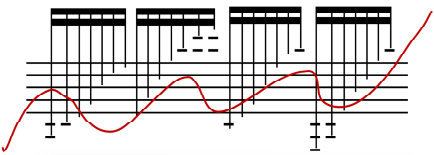
**COLOR BANDS ARE DYNAMICS, HOT/WARM/COOL/COLD**

**PITCHES ARE ALWAYS UNSTABLE, TIPPING/WORBLING/MORE REED**

**NEGATIVE IMAGE BREAKING TOWARD MULTIPHONIC**

**I**

APPROXIMATE TIME: 4 MINUTES  
**AVEAUX GADREAUX - Bass CLARINET**

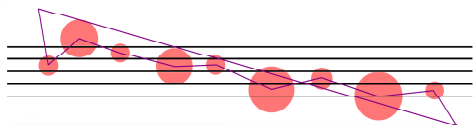


APPROXIMATE TIME: 4 MINUTES

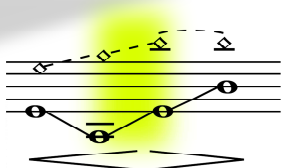
# AVEAUX GADREAU - BASS CLARINET

PERFORM SEGMENTS LEFT TO RIGHT

EACH SEGMENT MAKES AN IMPERCEPTIBLE TRANSITION TO THE NEXT

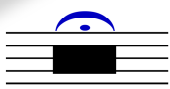


ANY NOTES OF THE CHORDS MAKE BE USED IN THE SEGMENTS

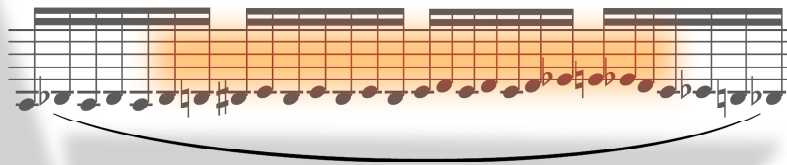


NOTES OF THE CHORDS ARE ALWAYS USED IN THE TRANSITIONS

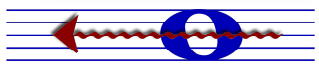
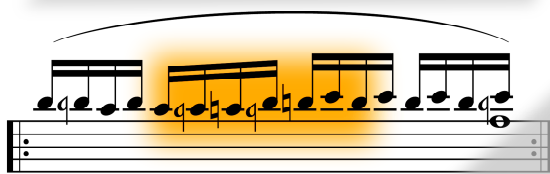
COLORS SUGGEST INTENSITIES



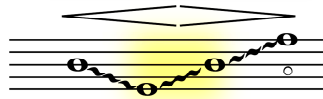
DUET WITH CELLO IS PRIMARY



2

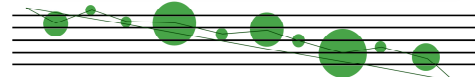


DUET WITH BASS CLARINET IS PRIMARY



NOTES OF THE CHORDS ARE ALWAYS USED IN TRANSITIONS

ANY NOTES OF THE CHORDS MAY BE USED IN THE SEGMENTS

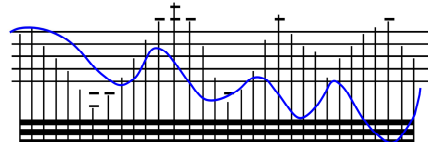


EACH SEGMENT MAKES AN IMPERCEPTIBLE TRANSITION TO THE NEXT

PERFORM SEGMENTS LEFT TO RIGHT

# AVEAUX GADREAU - CELLO

APPROXIMATE TIME: 4 MINUTES



2