

К Водам Тихим

for Beth Griffith

(By Still Waters)

About the temperament:

The symbols for tone alterations are lowered by a lesser or greater amount, depending on the direction and resonance. Emphasis of the dissonance or direction is encouraged.

About the timing:

Note length is suggested. The song is a plea and a lullaby, full of despair and sadness as well as love and hope for beauty and wonder and gentleness.

All resonant intervals are pure, otherwise tempered.
All notes get stretched longer or shorter as desired.



Indicates harmonic singing partial rise/fall

Voice

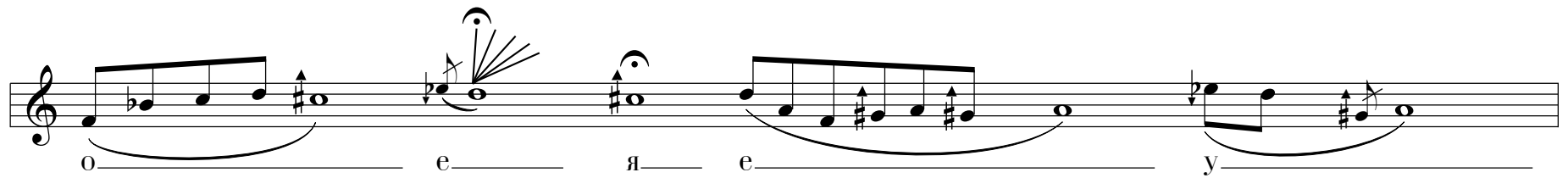
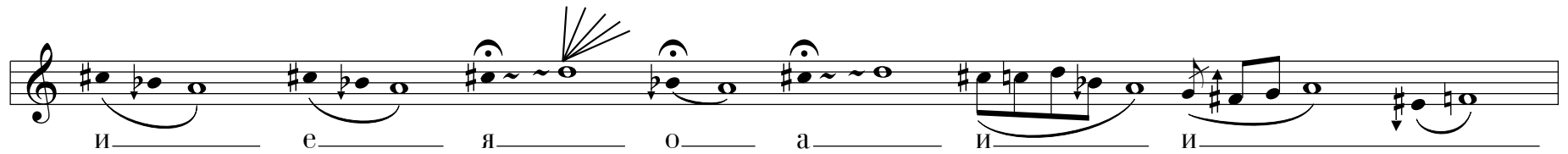
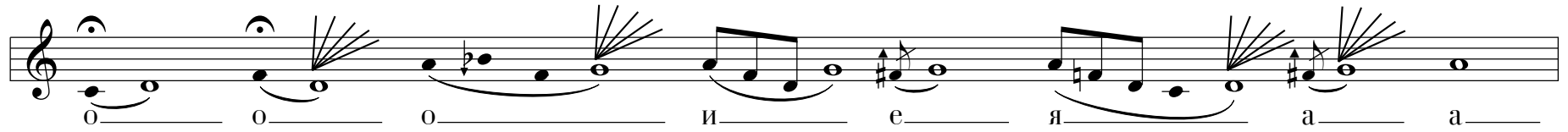
о о а ы о й

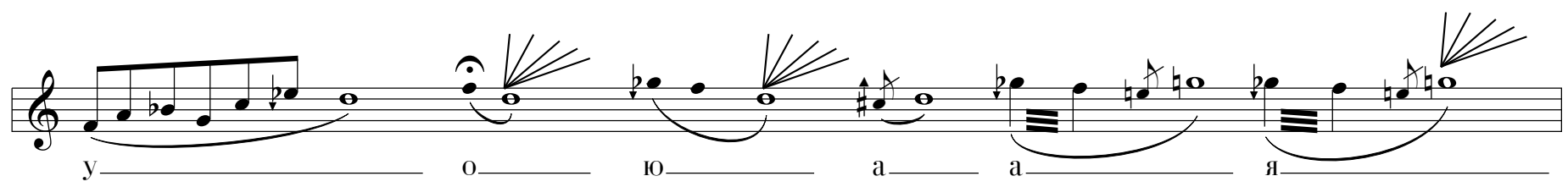
я и е е

у у у а я

(Syllables: а=а, у=и, о=о, й=уі, и=і, ы=у, е=е, я=уа, ю=уи)

Copyright ©2004 by Dennis Báthory-Kitsz. All rights reserved. Westleaf Edition W0410.

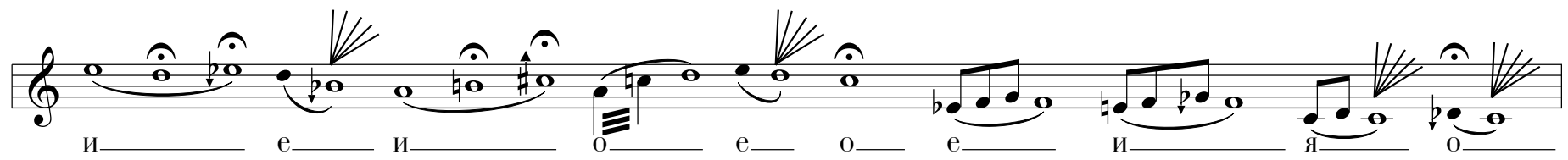




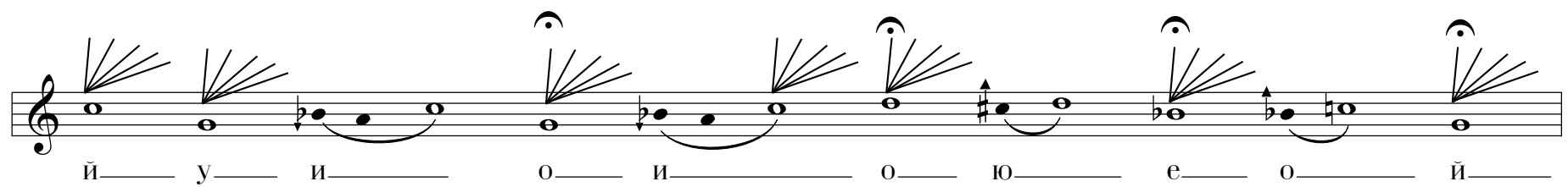
у о ю а а я



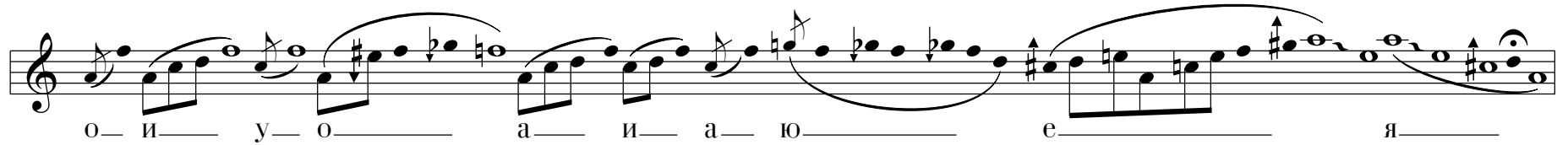
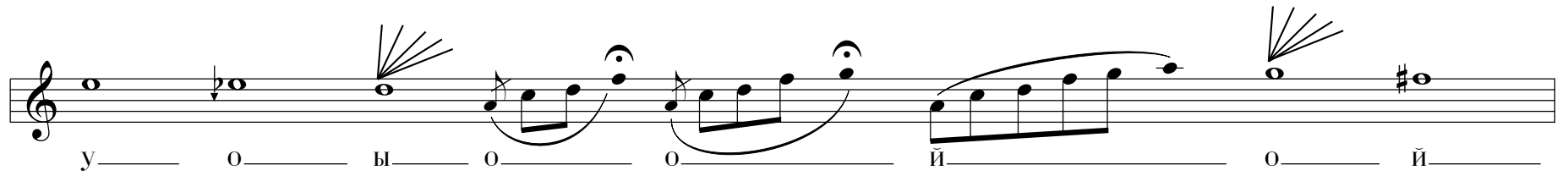
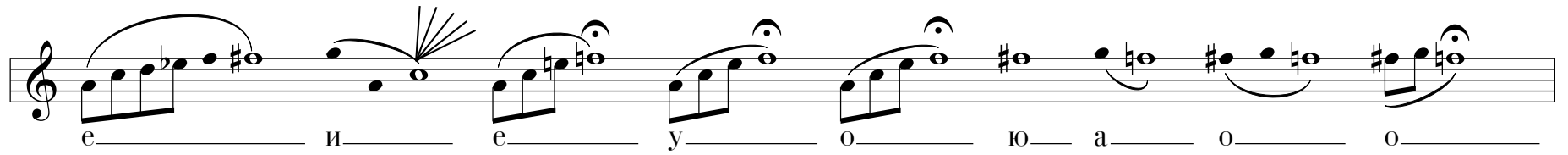
е я а е и а ы а и

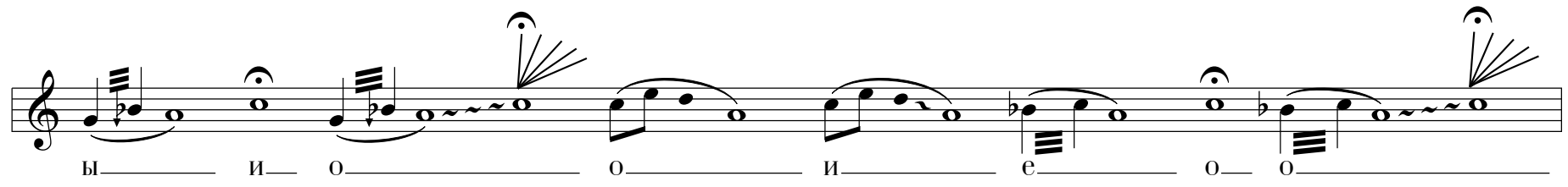


и е и о е о е и я о

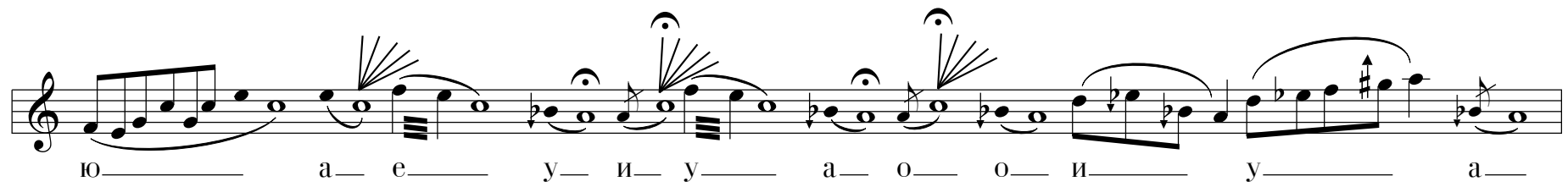


й у и о и о ю е о й

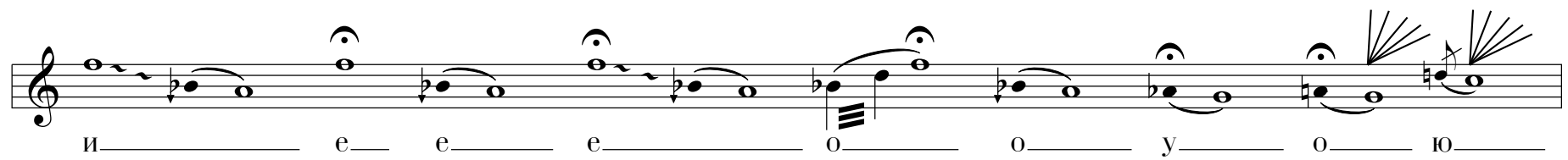




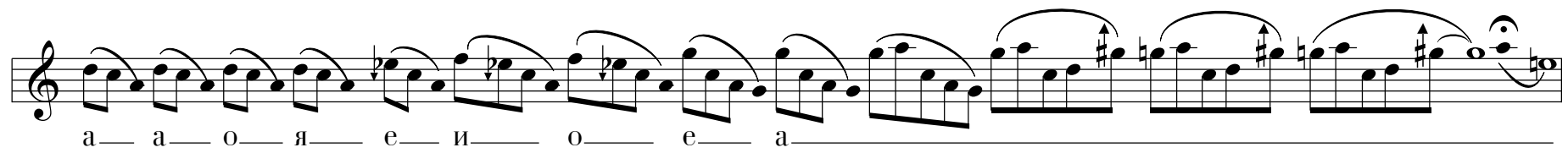
ы и о о и е о о



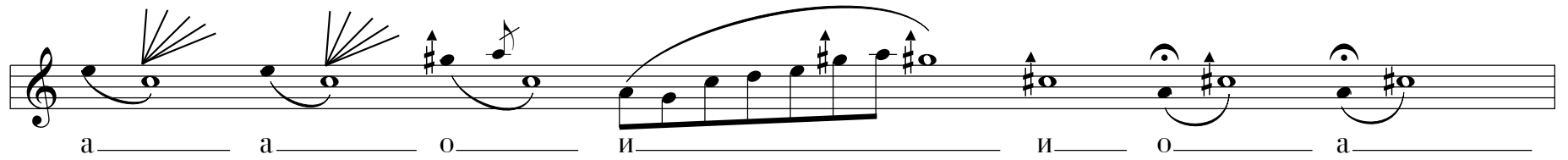
ю а е у и у а о о и у а



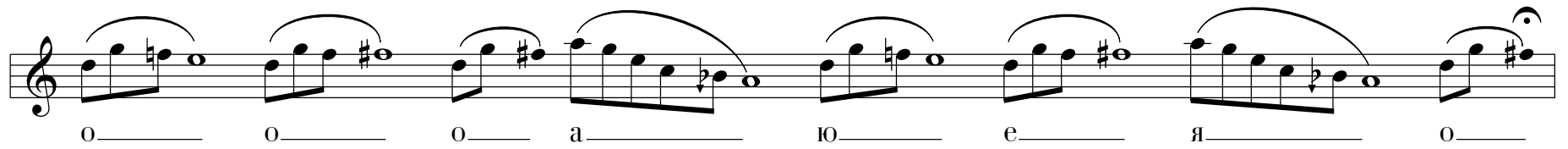
и е е е о о у о ю



а а о я е и о е а



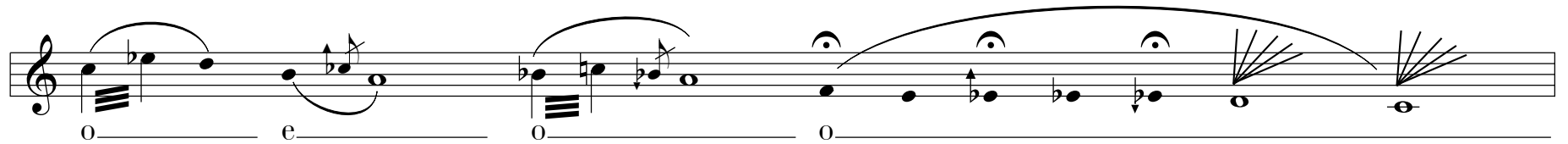
а а о и и о а



о о о а ю е я о



е и и и о е й и я е у у



о е о о

е о и е и

This musical staff features a treble clef and a key signature of one sharp (F#). The melody consists of six measures. The first measure contains a quarter note G4, followed by eighth notes A4, B4, and C5, all beamed together. The second measure has a half note D5 with a sharp sign above it. The third measure contains a quarter note D5, followed by eighth notes E5, F#5, and G5, all beamed together. The fourth measure has a half note G5 with a sharp sign above it. The fifth measure contains a quarter note G5, followed by eighth notes A5, B5, and C6, all beamed together. The sixth measure has a half note C6 with a sharp sign above it. The lyrics 'е о и е и' are written below the staff, aligned with the notes.

о о а ы о й я и е у а я

This musical staff features a treble clef and a key signature of one sharp (F#). The melody consists of ten measures. The first measure contains a quarter note G4, followed by eighth notes A4, B4, and C5, all beamed together. The second measure has a half note D5 with a sharp sign above it. The third measure contains a quarter note D5, followed by eighth notes E5, F#5, and G5, all beamed together. The fourth measure has a half note G5 with a sharp sign above it. The fifth measure contains a quarter note G5, followed by eighth notes A5, B5, and C6, all beamed together. The sixth measure has a half note C6 with a sharp sign above it. The seventh measure contains a quarter note C6, followed by eighth notes B5, A5, and G5, all beamed together. The eighth measure has a half note G5 with a sharp sign above it. The ninth measure contains a quarter note G5, followed by eighth notes F#5, E5, and D5, all beamed together. The tenth measure has a half note D5 with a sharp sign above it. The lyrics 'о о а ы о й я и е у а я' are written below the staff, aligned with the notes.