

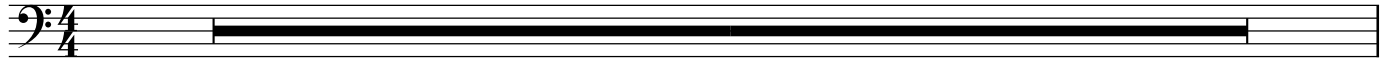
# A Fanfare for Peace: The Lily and the Thorn

*A Fanfare for the Vermont Bicentennial, 1791-1991*  
*Commissioned by the Vermont Philharmonic Orchestra*

Dennis Báthory-Kitsz

$\text{♩} = 120$

10



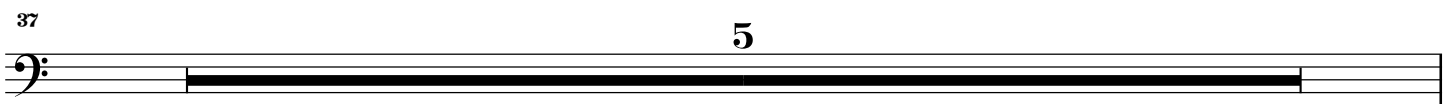
*con sord.*



A



B



Northfield

42

*ff* *f*

Musical staff 42-49 in bass clef. It begins with a rest, followed by eighth notes, then quarter notes, and ends with a half note. Dynamics range from *ff* to *f*.

50

*ff* *pp* *ppp*

**C** *con sord.*

Musical staff 50-56 in bass clef. It features a half note, quarter notes, and eighth notes. Dynamics range from *ff* to *ppp*. A box labeled 'C' is above the staff, and 'con sord.' is written above the final measure. Triplet markings are present at the end.

57

*senza sord. -- air only*

Musical staff 57-62 in bass clef. It consists of eighth notes with triplet markings. A dashed line indicates a breath mark over a note.

63

**D** 10 9

Musical staff 63-65 in bass clef. It contains two whole rests. Above the first rest is the number '10' and above the second is '9'. A box labeled 'D' is centered above the staff.

**E**

82

*f* *ff*

Musical staff 82-87 in bass clef. It features a series of eighth notes with slurs. Dynamics range from *f* to *ff*. A box labeled 'E' is above the first measure.

88

Musical staff 88-93 in bass clef. It continues the eighth-note pattern with slurs.

94

**F**

Musical staff 94-100 in bass clef. It continues the eighth-note pattern with slurs. A box labeled 'F' is above the staff.

101

6 *accel.* *rit.* *accel.* *rit.*

Musical staff 101-112 in bass clef. It contains six whole rests. Above the first is the number '6'. Above the second and fourth rests are the markings 'accel.' and 'rit.' respectively.

113

*ppp* *pp* *ppp* *pppp*

Musical staff 113-118 in bass clef. It begins with a quarter note, followed by a half note, and ends with a whole note. Dynamics range from *ppp* to *pppp*.