



— MISSA —  
da camera

D. B. K. M. S.

Kyrie

ni-e  
le-  
ni-e  
le-  
ni-e  
le-  
ni-e  
le-

VOICE  
1-2

VOICE  
3-4

VOICE  
5-6

VOICE  
7-8

PERCUSSION  
1-2

PERCUSSION  
3-4

KRUMPHOLTZ  
1-2

SHAWM  
CHARETER

PIANO  
1-2-3-4-5

PERCUSSION  
1-2

VIOLIN  
6-7-8-9-10

PERCUSSION  
1-2-3-4

CHORUS  
1-2-3-4-5

PERCUSSION  
1-2-3-4

PERCUSSION  
1-2-3

PERCUSSION  
1-2-3-4-5

PERCUSSION  
1-2-3-4-5

PERCUSSION  
1-2-3-4-5

TACT

TACT

TACT

TACT

TACT

TACT

TACT

TACT

TACT



Handwritten musical score for the first system, featuring six staves:

- Voices 1-8:** Multiple vocal parts with lyrics including "i-", "i-", "i-", "i-", "i-", "i-".
- Organo Recanto:** A single staff with a melodic line.
- Organo Recanto 2:** A single staff with a melodic line.
- Organo:** A single staff with a melodic line.

Handwritten musical score for the second system, featuring six staves:

- Voices 1-8:** Multiple vocal parts with lyrics including "le-i-", "le-i-", "le-i-", "le-i-".
- Organo Recanto:** A single staff with a melodic line.
- Organo Recanto 2:** A single staff with a melodic line.
- Organo:** A single staff with a melodic line.

ISMHN 63:2-6 (LATIN) quasi-chart



et vestimenta tua, sicut tuum, ISMHN 63:2-6 (ENGLISH)  
Square ergo rubrum est indumentum tuum, ISMHN 63:2-6 (ENGLISH)

spoken



Handwritten musical score for the first system, featuring five staves. The staves are labeled on the left as follows: *Voices 1*, *Voices 2*, *Voices 3*, *Voices 4*, and *voice 8*. The notation includes various rhythmic values, accidentals, and dynamic markings such as *rit.* and *rit. e-*. The music is written in a complex, multi-measure style.

calcantium in torculari? Torcular calcavi solus, et de genibus non est vir mecum; calcavi eos in ira mea; et aspersus est sanguis eorum super vestimenta mea,

Handwritten musical score for the second system, featuring five staves. The staves are labeled on the left as follows: *voice 1*, *voice 3*, *voice 5*, *voice 8*, and *voice 1*. The notation includes various rhythmic values, accidentals, and dynamic markings such as *le-* and *son*. The word *breve* is written above the first staff. The music is written in a complex, multi-measure style.

et omnia indumenta mea inquinavi. Dies enim ultionis meae venit. Circumspexi, et non erat auxiliator; quaesivi, et non fuit qui adjuvaret; et salvavit mihi brachium meum, et indignatio mea ipsa auxiliata est mihi. Et







Handwritten musical score for a choir and orchestra. The score is written on a system of seven staves. The top three staves are labeled 'Voice 1', 'Voice 3', and 'Voice 5'. The bottom four staves are labeled 'Violins 4', 'Violins 1', and 'Pianos 1' and '2'. The music is in a key with one flat (B-flat) and a common time signature (C). The lyrics 'ri-e e-' and 'ri-e e-' are written under the first two voice staves. The score includes various musical notations such as notes, rests, and dynamic markings.



Gloria

\* = cue leaders

Handwritten musical score for Gloria, featuring multiple staves for voices and percussion. The score includes the following elements:

- Voices:** Staves 1 through 8, labeled "VOICE 1" through "VOICE 8". Each staff contains the lyrics "Gloria in excelsis De-o" with corresponding musical notation.
- Percussion:** Staves 9 through 12, labeled "PERCUSSION 1" through "PERCUSSION 4".
- Choir:** Staves 13 through 15, labeled "CHORUS 1" through "CHORUS 3".
- Accompaniment:** Staves 16 through 18, labeled "ACCOMPANIMENT 1" through "ACCOMPANIMENT 3".
- Dynamic Markings:** *ff* (fortissimo) is used throughout the score.
- Performance Instructions:** "Et in terra pax" is written below the percussion and choir staves.
- Rehearsal Marks:** Numbers 1 through 8 are placed above the vocal staves to indicate specific points in the music.
- Staff 5:** Labeled "PERCUSSION 5" and "CHORUS 4", it contains a large bracketed section, possibly indicating a specific performance instruction or a section to be played.



**VOICE 1**  
CHANTER

**VOICE 2**  
KANTOR

**VOICE 3**  
PERC. 1

**VOICE 4**  
PERC. 2

**VOICE 5**  
STRUM

**VOICE 6**  
PERC. 3

**VOICE 7**  
CLAR.

**VOICE 8**  
PERC. 4

**PERC. 5**  
[VOICE 4]

**KEYB. 2.**

homini bus  
bonae voluntatis  
laudamus te  
bene di ca mus te  
a do ra mus te  
glo ri fi ca mus -  
be ne di ca mus te  
2 do ra mus te  
glo ri fi ca mus -  
be ne di ca mus te  
a do ra mus te  
glo ri fi ca mus -  
\*  
be ne di ca mus te  
a do ra mus te  
glo ri fi ca mus -  
be ne di ca mus te  
a do ra mus te  
glo ri fi ca mus -  
\*  
be ne di ca mus te  
a do ra mus te  
glo ri fi ca mus -  
be ne di ca mus te  
a do ra mus te  
glo ri fi ca mus -

bonae voluntatis  
laudamus te  
bonae voluntatis  
laudamus te  
bonae voluntatis  
laudamus te  
bonae voluntatis  
laudamus te  
bonae voluntatis  
laudamus te  
bonae voluntatis  
laudamus te  
bonae voluntatis  
laudamus te  
bonae voluntatis  
laudamus te  
bonae voluntatis  
laudamus te  
bonae voluntatis  
laudamus te  
bonae voluntatis  
laudamus te  
bonae voluntatis  
laudamus te

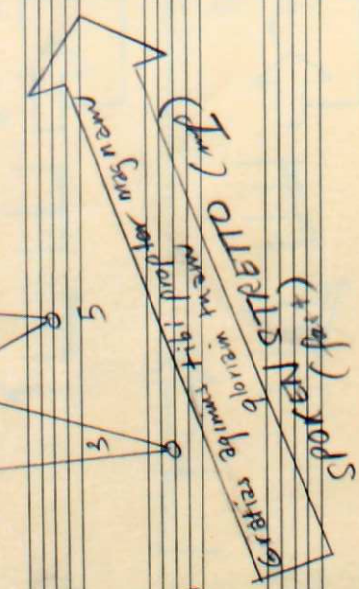
homini bus  
homini bus  
homini bus  
homini bus  
homini bus  
homini bus  
homini bus  
homini bus  
homini bus  
homini bus  
homini bus  
homini bus  
homini bus  
homini bus  
homini bus  
homini bus  
homini bus  
homini bus  
homini bus  
homini bus  
homini bus  
homini bus  
homini bus  
homini bus

homini bus  
homini bus  
homini bus  
homini bus  
homini bus  
homini bus  
homini bus  
homini bus  
homini bus  
homini bus  
homini bus  
homini bus  
homini bus  
homini bus  
homini bus  
homini bus  
homini bus  
homini bus  
homini bus  
homini bus  
homini bus  
homini bus  
homini bus  
homini bus



Handwritten musical score with multiple staves and annotations. The score includes lyrics such as "De-us Pa-ter", "Do-mi-ne De-us", "Subi-li-tus", and "om-ni-po-tens". It features dynamic markings like *mf*, *ff*, and *pp*, and performance instructions like "LX [SFX]", "SFX", and "LX [SFX]".

VOICE 1  
CHORUS  
VOICE 2  
PERC. 1  
VOICE 3  
PERC. 1  
VOICE 4  
PERC. 2  
VOICES  
STRUMM  
VOICE 6  
PERC. 3  
VOICE 7  
CLAR.  
VOICE 8  
PERC. 4  
PERC. 5  
[VOICES]  
PERC. 2.





Handwritten musical score for a choir and organ. The score is written on ten staves, each with a label on the left side. The lyrics are in Latin: "Domine Deus, Agnus Dei, Filius Patris".

The staves are labeled as follows:

- ACT. 1
- SOP. REC. 2
- AL.
- ORG. 1
- ORG. 2
- ORG. 3
- PLTH.
- TEN REC. 3
- ALPH.
- AL. REC. 4

The lyrics are written across the staves:

- ACT. 1: \* Domine Deus, Agnus Dei, Filius Patris
- SOP. REC. 2: Domine Deus, Agnus Dei, Filius Patris
- AL.: Domine Deus, Agnus Dei, Filius Patris
- ORG. 1: Domine Deus, Agnus Dei, Filius Patris
- ORG. 2: Domine Deus, Agnus Dei, Filius Patris
- ORG. 3: Domine Deus, Agnus Dei, Filius Patris
- PLTH.: Domine Deus, Agnus Dei, Filius Patris
- TEN REC. 3: Domine Deus, Agnus Dei, Filius Patris
- ALPH.: Domine Deus, Agnus Dei, Filius Patris
- AL. REC. 4: Domine Deus, Agnus Dei, Filius Patris

Additional annotations include:

- "speak while playing" with a wavy line symbol above the organ parts.
- "Domine Fili unigenite Jesu Christe" written below the organ parts.
- Asterisks (\*) are placed at the beginning of the ACT. 1 and PLTH. staves.



Handwritten musical score for a vocal ensemble. The score is written on ten staves, each with a specific instrument or voice part indicated on the left. The lyrics are in Latin and are written below the notes.

**Staff 1:** VOICE / REC 1. Lyrics: Qui tol. lis pec. ca. ta mun. di. *(Crescendo)*

**Staff 2:** SPEC 2. Lyrics: Qui tol. lis pec. ca. ta mun. di. *(Crescendo)*

**Staff 3:** VOICE / KRN 3. Lyrics: Qui tol. lis pec. ca. ta mun. di. *(Crescendo)*

**Staff 4:** OBRN 4. Lyrics: Qui tol. lis pec. ca. ta mun. di. *(Crescendo)*

**Staff 5:** VOICE / OBRN 5. Lyrics: mi. se. re. re. no. *(Crescendo)*

**Staff 6:** OBRN 6. Lyrics: mi. se. re. re. no. *(Crescendo)*

**Staff 7:** KRN 7. Lyrics: su. sci. pe. de. pre. ca. ti. o. num. no. *(Crescendo)*

**Staff 8:** VOICE / REC 8. Lyrics: su. sci. pe. de. pre. ca. ti. o. num. no. *(Crescendo)*

**Staff 9:** KRN 9. Lyrics: su. sci. pe. de. pre. ca. ti. o. num. no. *(Crescendo)*

**Staff 10:** REC 4. Lyrics: su. sci. pe. de. pre. ca. ti. o. num. no. *(Crescendo)*

Additional markings include dynamic markings like *ppp*, *pp*, *p*, and *f*, and performance instructions like *strum* and *bis*.



Handwritten musical score on ten staves. The notation includes notes, rests, and dynamic markings such as *ppp* and *pp*. The lyrics are written below the notes.

Lyrics: *Mi se re re no bis* (repeated in various forms), *Quo ni am tu so lus sanc tus*, *Mi se re re no bis*, *Mi se re re no bis*, *Mi se re re no bis*, *Mi se re re no bis*, *Mi se re re no bis*, *Mi se re re no bis*, *Mi se re re no bis*, *Mi se re re no bis*, *Mi se re re no bis*.

Staff labels (from top to bottom):

- ME 1
- SOP 2
- ALC 1
- OPR 1
- OPR 2
- OPR 3
- CHOR
- ME 2
- ALC 3
- ME 4

Handwritten notes and markings:

- 1. *ppp* (multiple instances)
- 2. *ppp*
- 3. *ppp*
- 4. *ppp*
- 5. *ppp*
- 6. *ppp*
- 7. *ppp*
- 8. *ppp*
- 9. *ppp*
- 10. *ppp*
- 11. *ppp*
- 12. *ppp*
- 13. *ppp*
- 14. *ppp*
- 15. *ppp*
- 16. *ppp*
- 17. *ppp*
- 18. *ppp*
- 19. *ppp*
- 20. *ppp*
- 21. *ppp*
- 22. *ppp*
- 23. *ppp*
- 24. *ppp*
- 25. *ppp*
- 26. *ppp*
- 27. *ppp*
- 28. *ppp*
- 29. *ppp*
- 30. *ppp*
- 31. *ppp*
- 32. *ppp*
- 33. *ppp*
- 34. *ppp*
- 35. *ppp*
- 36. *ppp*
- 37. *ppp*
- 38. *ppp*
- 39. *ppp*
- 40. *ppp*
- 41. *ppp*
- 42. *ppp*
- 43. *ppp*
- 44. *ppp*
- 45. *ppp*
- 46. *ppp*
- 47. *ppp*
- 48. *ppp*
- 49. *ppp*
- 50. *ppp*
- 51. *ppp*
- 52. *ppp*
- 53. *ppp*
- 54. *ppp*
- 55. *ppp*
- 56. *ppp*
- 57. *ppp*
- 58. *ppp*
- 59. *ppp*
- 60. *ppp*
- 61. *ppp*
- 62. *ppp*
- 63. *ppp*
- 64. *ppp*
- 65. *ppp*
- 66. *ppp*
- 67. *ppp*
- 68. *ppp*
- 69. *ppp*
- 70. *ppp*
- 71. *ppp*
- 72. *ppp*
- 73. *ppp*
- 74. *ppp*
- 75. *ppp*
- 76. *ppp*
- 77. *ppp*
- 78. *ppp*
- 79. *ppp*
- 80. *ppp*
- 81. *ppp*
- 82. *ppp*
- 83. *ppp*
- 84. *ppp*
- 85. *ppp*
- 86. *ppp*
- 87. *ppp*
- 88. *ppp*
- 89. *ppp*
- 90. *ppp*
- 91. *ppp*
- 92. *ppp*
- 93. *ppp*
- 94. *ppp*
- 95. *ppp*
- 96. *ppp*
- 97. *ppp*
- 98. *ppp*
- 99. *ppp*
- 100. *ppp*



VOICE 1  
 CHANTAL  
 VOICE 2  
 FRUITA  
 VOICES 3  
 PERC.  
 VOICE 4  
 PERC.  
 VOICES  
 STAFF  
 VOICE 6  
 PERC.  
 VOICE 7  
 OPERA  
 VOICES 8  
 PERC.  
 PERC.  
 VOICE 5  
 KATIA  
 2

Tu solus Dominus  
 Tu solus altissimus Jesus  
 Cum sancto spiritu in gloria  
 Tu solus Dominus  
 Tu solus altissimus Jesus  
 Cum sancto spiritu in gloria  
 Tu solus Dominus  
 Tu solus altissimus Jesus  
 Cum sancto spiritu in gloria  
 Tu solus Dominus  
 Tu solus altissimus Jesus  
 Cum sancto spiritu in gloria  
 Tu solus Dominus  
 Tu solus altissimus Jesus  
 Cum sancto spiritu in gloria  
 Tu solus Dominus  
 Tu solus altissimus Jesus  
 Cum sancto spiritu in gloria



Handwritten musical score on 16 staves. The score is divided into two systems by a double bar line. The first system contains staves 1-7, and the second system contains staves 8-14. The staves are labeled as follows:

- VOICE 1 (Soprano): *De-i pe-tri*
- VOICE 2 (Alto): *De-i pe-tri*
- VOICE 3 (Tenor): *De-i pe-tri*
- VOICE 4 (Bass): *De-i pe-tri*
- VOICE 5 (Soprano): *De-i pe-tri*
- VOICE 6 (Alto): *De-i pe-tri*
- VOICE 7 (Tenor): *De-i pe-tri*
- VOICE 8 (Bass): *De-i pe-tri*
- VOICE 9 (Soprano): *De-i pe-tri*
- VOICE 10 (Alto): *De-i pe-tri*
- VOICE 11 (Tenor): *De-i pe-tri*
- VOICE 12 (Bass): *De-i pe-tri*
- VOICE 13 (Soprano): *De-i pe-tri*
- VOICE 14 (Alto): *De-i pe-tri*

The notation includes various musical symbols such as clefs, notes, rests, and dynamic markings like *ff* (fortissimo). The lyrics are written below the notes in a cursive script.



# Credo (♩ = 108 ca.)

mf Cre-do in u-num De-um, Pa-trem om-ni-po-ten-tem, fac-to-rem cae-li et ter-rae vi-si-bi-li-um om-ni-um, et in-vi-si-bi-li-um Do-mi-num Je-su-m Christ-um  
mf Cre-do in u-num De-um, Pa-trem om-ni-po-ten-tem, fac-to-rem cae-li et ter-rae vi-si-bi-li-um om-ni-um, et in-vi-si-bi-li-um Do-mi-num Je-su-m Christ-um  
mf Cre-do in u-num De-um, Pa-trem om-ni-po-ten-tem, fac-to-rem cae-li et ter-rae vi-si-bi-li-um om-ni-um, et in-vi-si-bi-li-um Do-mi-num Je-su-m Christ-um

VOICE 1  
VOICE 2  
VOICE 3

WOODWIND 1  
WOODWIND 2  
WOODWIND 3

FLUTE 1  
FLUTE 2  
FLUTE 3

(Ps. 66:7-2) Ju. bi-

with mallets (rhythm)

with mallets (raster)

TACT

TACT

TACT



VOICE 5  
 Fi-li-um De-i u-ni-gen-i-tum, Et ex Pa-tre no-nam an-te om-ni-a sae-cu-la De-um de-um  
 VOICE 7  
 Fi-li-um De-i u-ni-gen-i-tum, Et ex Pa-tre no-nam an-te om-ni-a sae-cu-la De-um de-um  
 VOICE 8  
 Fi-li-um De-i u-ni-gen-i-tum Et ex Pa-tre no-nam an-te om-ni-a sae-cu-la De-um de-um  
 VOICE 1  
 Pa-te De-o, om-  
 VOICE 3  
 joy-ful noise  
 Psalm. All  
 um di-ci- te earth.  
 mi-ne e-  
 Sing the glo-



Pa-tri: per quem om-ni-a fac-ta sunt qui pro-pat-er nos ho-mi-nes et pro-pat-er nos tra-mi-sa-lu-ten-de-scen-dit de cae-lis Et in-car-natus est de Spi-ri-tu Sanc-to ex Ma-ri-a Vir-gi-ne et ho-mo-fac-tus est,  
 Pa-tri: per quem om-ni-a fac-ta sunt qui pro-pat-er nos ho-mi-nes et pro-pat-er nos tra-mi-sa-lu-ten-de-scen-dit de cae-lis Et in-car-natus est de Spi-ri-tu Sanc-to ex Ma-ri-a Vir-gi-ne et ho-mo-fac-tus est,  
 Pa-tri: per quem om-ni-a fac-ta sunt qui pro-pat-er nos ho-mi-nes et pro-pat-er nos tra-mi-sa-lu-ten-de-scen-dit de cae-lis Et in-car-natus est de Spi-ri-tu Sanc-to ex Ma-ri-a Vir-gi-ne et ho-mo-fac-tus est.

Jus De-um of his name ; Give to-him glo-ri-ous praise- Say to God

Musical notation for voices and piano accompaniment. The piano part consists of three staves with chords and rhythmic patterns. The vocal parts are arranged in three voices (1, 2, 3) and include lyrics in Latin and English.

Empty musical staves for additional notation or performance.

VOICE 5  
 VOICE 7  
 VOICE 8  
 VOICE 1  
 VOICE 3  
 HARP 1  
 HARP 2  
 PIANO 1  
 PIANO 2  
 PIANO 3



VOICE 5  
VOICE 7  
VOICE 8  
VOICE 1  
VOICE 3  
MOUTH 1  
MOUTH 2  
FLUTE 1  
FLUTE 2  
FLUTE 3

Cru-ci-fix-us e-ti-am pro-no-bis sub Pon-ti-o Pi-la-to pas-sus et se-pul-tus est. Et re-sur-rexit ter-ti-a di-e se-cun-dum Scri-p tu-ras

Cru-ci-fix-us e-ti-am pro-no-bis sub Pon-ti-o Pi-la-to pas-sus et se-pul-tus est. Et re-sur-rexit ter-ti-a di-e se-cun-dum Scri-p tu-ras

Cru-ci-fix-us e-ti-am pro-no-bis sub Pon-ti-o Pi-la-to pas-sus et se-pul-tus est. Et re-sur-rexit ter-ti-a di-e se-cun-dum Scri-p tu-ras

Do-mi-ne in mul-ti-tu-di-ne so-great

o-pe-ra tu-a in-ter-ri-bi-le sunt (God) ) How ter-ri-ble are - thy deeds!



Et a-scen-dit in coe-lum: se-det ad dex-ter-am Pa-tris. Et i-ter-nam ven-tur-us est cum glo-ri-a ju-di-ca-re vi-vos, et mor-tuos cu-jus regni non er-it fi-nis

Et a-scen-dit in coe-lum: se-det ad dex-ter-am Pa-tris. Et i-ter-nam ven-tur-us est cum glo-ri-a ju-di-ca-re vi-vos, et mor-tuos cu-jus regni non er-it fi-nis

Et a-scen-dit in coe-lum: se-det ad dex-ter-am Pa-tris. Et i-ter-nam ven-tur-us est cum glo-ri-a ju-di-ca-re vi-vos, et mor-tuos cu-jus regni non er-it fi-nis

1 voice

2 voice

3 voice

Do -

So

great

1 organ

2 organ

III

III

1 organ

2 organ

3 organ

voice 5  
voice 4  
voice 3  
voice 1  
voice 3  
organ 1  
organ 2  
organ 1  
organ 2  
organ 3



Handwritten musical score for a choir and piano accompaniment. The score is written on 16 staves, with the first three staves for voices and the remaining for piano accompaniment.

**Voice 1:** Et in spi-ri-tum sanc-tum Do-mi-num et vi-vi-fi-can-tem: qui ex Pa-tre Fi-li-o-que pro-ce-dit, Qui cum Pa-tre et Fi-li-

**Voice 2:** Et in Spi-ri-tum Sanc-tum Do-mi-num et vi-vi-fi-can-tem: qui ex Pa-tre Fi-li-o-que pro-ce-dit, Qui cum Pa-tre et Fi-li-

**Voice 3:** Et in Spi-ri-tum Sanc-tum Do-mi-num et vi-vi-fi-can-tem: qui ex Pa-tre Fi-li-o-que pro-ce-dit, Qui cum Pa-tre et Fi-li-

**Piano:** The piano accompaniment features a prominent melodic line in the right hand, often marked with *ff* (fortissimo), and a more rhythmic accompaniment in the left hand. The score includes various musical notations such as slurs, ties, and dynamic markings.

**Lyrics:** The lyrics are in Latin, describing the Holy Spirit and the Father and Son. The text is written in blue ink above the vocal staves.



VOICE 5  
 VOICE 7  
 VOICE 8  
 VOICE 1  
 VOICE 3  
 ACCOR 1  
 ACCOR 2

si mul a. do. ra. tur, et con. glo. ri. fi. ca. tur, qui lo. ca. tus est per pro. phe. tas, Et u. nam sanc. tum ca. tho. li. cam Ec. cle. si. am, Con. fi. te. or u. num bap. tis. ma in re. mi. si. o.  
 si mul a. do. ra. tur, et con. glo. ri. fi. ca. tur, qui lo. ca. tus est per pro. phe. tas, Et u. nam sanc. tum Ca. tho. li. cam Ec. cle. si. am, Con. fi. te. or u. num bap. tis. ma in re. mi. si. o.  
 si mul a. do. ra. tur, et con. glo. ri. fi. ca. tur, qui lo. ca. tus est per pro. phe. tas, Et u. nam sanc. tum ca. tho. li. cam Ec. cle. si. am, Con. fi. te. or u. num bap. tis. ma in re. mi. si. o.

he  
 tu - tis tu - ae  
 he  
 en - ti - en - ti -  
 ti - bi  
 cruce  
 cruce  
 cruce

VOICE 1  
 VOICE 2  
 VOICE 3



V.S.

Handwritten musical score for voice and piano. The score is written on a system of five staves. The top staff is the vocal line, and the bottom four staves are for the piano accompaniment.

**Vocal Line:**

- Et ex-pec-to re-sur-rec-ti-o-nem mor-tu-o-rum. Et vi-tan ven-tu-ri sae-cu-li. A-men
- Et ex-pec-to re-sur-rec-ti-o-nem mor-tu-o-rum. Et vi-tan ven-tu-ri sae-cu-li. A-men
- Et ex-pec-to re-sur-rec-ti-o-nem mor-tu-o-rum. Et vi-tan ven-tu-ri sae-cu-li. A-men

**Piano Accompaniment:**

- Left hand: *non pec-ca-to-rum*, *non pec-ca-to-rum*, *non pec-ca-to-rum*, *mi-*
- Right hand: *be-*, *ci-ta-*, *tu-*, *fore*, *the*

**Performance Markings:**

- morendo* (written above the piano part)
- rit.* (ritardando)
- ff* (fortissimo)
- f* (forte)
- mf* (mezzo-forte)
- mfz* (mezzo-fortissimo)
- mfz* (mezzo-fortissimo)

V.S.

Empty musical staves for the continuation of the piece.



Sanctus

Handwritten musical score for Sanctus on ten staves. The staves are labeled from top to bottom: Voice 1, Voice 2, Voice 3, Voice 4, Voice 5, Voice 6, Voice 7, Voice 8, Voice 9, and Cello. The score consists of ten numbered measures (1-10) with various musical notations including notes, rests, and dynamic markings. Vertical lines connect notes across staves, and horizontal lines indicate measure boundaries. A 'C' time signature is present at the beginning of the first measure.



Handwritten musical score on ten staves, numbered 1 to 10. The staves are labeled on the left as follows:

- Staff 1: Voice 1
- Staff 2: Voice 2
- Staff 3: Voice 3
- Staff 4: Voice 4
- Staff 5: Voice 5
- Staff 6: Voice 6
- Staff 7: Voice 7
- Staff 8: Voice 8
- Staff 9: Bass 9
- Staff 10: Bass 10

The score contains various musical notations including treble and bass clefs, notes, rests, and dynamic markings such as "p" (piano) and "f" (forte). The word "CONTINUA" is written across the middle of the staves. The word "Soprano" is written at the end of the first staff. The word "BASS" is written at the end of the last two staves. The word "Soprano" is also written at the end of the second staff. The word "BASS" is written at the end of the third staff. The word "Soprano" is written at the end of the fourth staff. The word "BASS" is written at the end of the fifth staff. The word "Soprano" is written at the end of the sixth staff. The word "BASS" is written at the end of the seventh staff. The word "Soprano" is written at the end of the eighth staff. The word "BASS" is written at the end of the ninth staff. The word "Soprano" is written at the end of the tenth staff.



Handwritten musical score on 16 staves. The score is divided into two main sections by a double bar line labeled "BELLIS - SEMPRE".

**Left Section:** Features vocal lines (Voice 1-8) and a piano accompaniment. The vocal lines contain lyrics such as "mi - mus", "mi - mus", "mi - mus", "mi - mus", "mi - mus", "mi - mus", "mi - mus", "mi - mus". The piano part includes notes with slurs and dynamic markings like "p" and "f".

**Right Section:** Features vocal lines (Voice 1-8) and a piano accompaniment. The vocal lines contain lyrics such as "sa -", "sa -", "sa -", "sa -", "sa -", "sa -", "sa -", "sa -". The piano part includes notes with slurs and dynamic markings like "p" and "f".

**Annotations:** A box labeled "Piano et voce" contains notes and slurs. A box labeled "Piano et voce" contains notes and slurs. A box labeled "Piano et voce" contains notes and slurs. A box labeled "Piano et voce" contains notes and slurs.

**Staff Labels:** Voice 1, Voice 2, Voice 3, Voice 4, Voice 5, Voice 6, Voice 7, Voice 8, Piano.



Benedictus

Handwritten musical score for the Benedictus section. It features ten staves for voices and instruments. The lyrics are: "Ho-san-na in ex-cel-sis, Ho-san-na in ex-cel-sis, Ho-san-na in ex-cel-sis, Ho-san-na in ex-cel-sis, Ho-san-na in ex-cel-sis, Ho-san-na in ex-cel-sis, Ho-san-na in ex-cel-sis, Ho-san-na in ex-cel-sis, Ho-san-na in ex-cel-sis, Ho-san-na in ex-cel-sis." The score includes dynamic markings such as *pp*, *ppp*, and *pppp*, and performance instructions like *TACT*, *subito*, and *al fine*. The section concludes with a *FINIS* marking.

Handwritten musical score for the Hosanna section. It features two staves: Voice 1 and Cello. The lyrics are: "Ho-san-na in ex-cel-sis, Ho-san-na in ex-cel-sis, Ho-san-na in ex-cel-sis, Ho-san-na in ex-cel-sis, Ho-san-na in ex-cel-sis, Ho-san-na in ex-cel-sis, Ho-san-na in ex-cel-sis, Ho-san-na in ex-cel-sis, Ho-san-na in ex-cel-sis, Ho-san-na in ex-cel-sis." The score includes dynamic markings such as *pp*, *ppp*, and *pppp*, and performance instructions like *TACT*, *subito*, and *al fine*.



Agnus Dei

slow

Handwritten musical notation for the first system, including vocal parts and instruments.

Voice 1: *qui tol-*

Voice 3: *qui tol-*

Voice 5: *qui tol-*

SSOP 1

SP 1

SP 2

TRP 4

LOW BELL 6

KAL (GUITAR)

SC 1

NS 2

Handwritten musical notation for the second system, including vocal parts and instruments.

Voice 1: *De-*

Voice 3: *De-*

Voice 5: *De-*

SSOP 1

SP 1

SP 2

TRP 4

LOW BELL 6

KAL (GUITAR)

SC 1

NS 2

Handwritten musical notation for the third system, including vocal parts and instruments.

Voice 1: *qui tol-*

Voice 3: *qui tol-*

Voice 5: *qui tol-*

SSOP 1

SP 1

SP 2

TRP 4

LOW BELL 6

KAL (GUITAR)

SC 1

NS 2

Handwritten musical notation for the fourth system, including vocal parts and instruments.

Voice 1: *lis pec-ca-*

Voice 3: *lis pec-ca-*

Voice 5: *lis pec-ca-*

SSOP 1

SP 1

SP 2

TRP 4

LOW BELL 6

KAL (GUITAR)

SC 1

NS 2



Handwritten musical score for voices and instruments. The score is written on ten staves. The first four staves are for voices, and the remaining six are for instruments. The lyrics are written below the first four staves.

**Voice 1:** mi-se-re-re no bis

**Voice 2:** se-re-re no bis

**Voice 3:** se-re-re no bis

**Voice 4:** se-re-re no bis

**Instrumental parts:** Flute, Clarinet, Bassoon, Trumpet, Trombone, and Drums. The instrumental parts are mostly rests, indicating they are silent during this section.

Handwritten musical score for voices and instruments. The score is written on ten staves. The first four staves are for voices, and the remaining six are for instruments. The lyrics are written below the first four staves.

**Voice 1:** De-i qui tol-

**Voice 2:** De-i qui tol-

**Voice 3:** De-i qui tol-

**Voice 4:** De-i qui tol-

**Instrumental parts:** Flute, Clarinet, Bassoon, Trumpet, Trombone, and Drums. The instrumental parts are mostly rests, indicating they are silent during this section.







Handwritten musical score for guitar, featuring a melody and accompaniment. The score is written on 16 staves, with the first six staves containing the main melody and the remaining ten staves providing a guitar accompaniment. The melody includes lyrics: "di qui", "de-i", "gim", "de-i", "gim", "de-i", "gim", "de-i", "gim", "de-i", "gim", "de-i", "gim", "de-i", "gim", "de-i".

The accompaniment consists of a series of chords and rhythmic patterns, including notes marked with 'x' and 'p' (piano). The score is written in a key signature of one sharp (F#) and a time signature of 4/4.

V1  
 V2  
 V3  
 V5  
 S1  
 T1  
 T2  
 T4  
 V6  
 KAL (Cont)  
 M1  
 M2







Handwritten musical score for guitar and voice. The score is written on 12 staves. The first six staves are for guitar, and the last six are for voice. The lyrics are in Latin and include the words: "na no-bis pa-cem", "na ho-bis pa-cem", "na no-bis pa-cem", "De-us in cae-lis rex cae-li et ter-rae", "De-us pater omnipotens", "De-us filius unigenitus", "De-us spiritus sanctus", "De-us qui sedes ad dex-teram pa-tris", "De-us qui cum pa-tre et spi-ri-tu sancto", "De-us qui con-surgis ad dex-teram pa-tris", "De-us qui cum pa-tre et spi-ri-tu sancto", "De-us qui con-surgis ad dex-teram pa-tris".

*Handwritten signature or name in cursive script.*