



Shahmat

for solo flute

Dennis Báthory-Kitsz

WESTLEAF
EDITION
PUBLISHERS OF MUSIC

W042

Shahmat

for flute solo

Time Approximately 10:00

*For Su Lian Tan
In Memory of John Balch*

Dennis Báthory-Kitsz

WESTLEAF
EDITION
PUBLISHERS OF MUSIC

Copyright ©2004 by Dennis Báthory-Kitsz (ASCAP).
All right reserved. Westleaf Edition No. W042.

Dedicated to the memory of John Balch

Shahmat

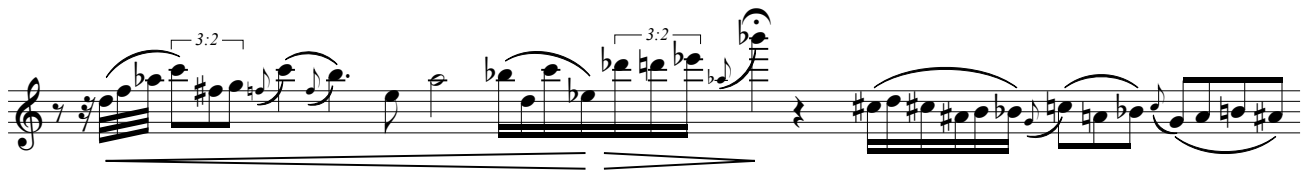
(shāh māt)

Dennis Báthory-Kitsz

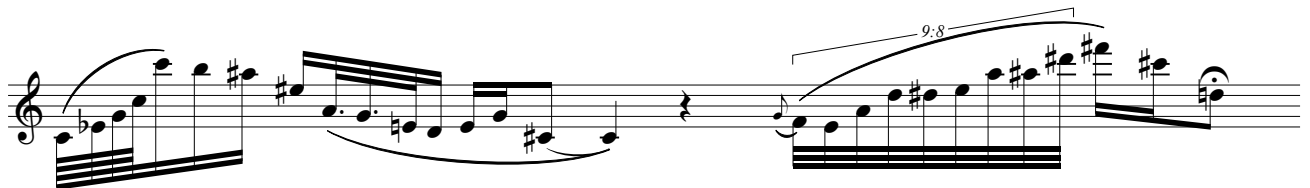
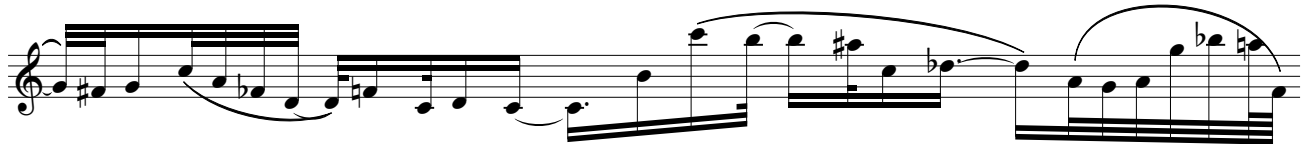
Flexible and free

♩ = 56

This page of musical notation consists of ten staves of music, likely for a string instrument. The notation includes various rhythmic markings and accidentals. The first staff begins with a 3:2 ratio. Subsequent staves feature ratios of 11:8, 12:8, 13:8, 14:8, 13:8, 13:8, 11:8, 10:8, and 9:8. The music is written in a treble clef with a key signature of one flat (B-flat). The notation includes eighth and sixteenth notes, rests, and various accidentals (sharps, flats, and naturals). The piece concludes with a final cadence on the tenth staff.



(swing, please)



(and swing again)



(you got it)

airier than before

9:8

3:2

11:8

11:8

11:8

12:8

12:8

13:8

13:8

13:8

14:8

14:8

14:8

13:8

13:8

13:8

11:8

This page of musical notation consists of ten staves of music, all in 7/4 time. The notation is complex, featuring a variety of rhythmic patterns and time signature changes. The first staff begins with a 11:8 ratio, followed by a 10:8 ratio. The second staff contains a 10:8 ratio, a 9:8 ratio, and a 10:8 ratio. The third staff features a 6:4 ratio, a 3:2 ratio, a 5:4 ratio, and a 15:12 ratio. The fourth staff includes a 5:4 ratio, a 9:8 ratio, and a 10:8 ratio. The fifth staff has a 5:4 ratio. The sixth staff contains a 3:2 ratio, a 9:8 ratio, and a 7:4 ratio. The seventh staff features a 3:2 ratio, a 3:2 ratio, and a 9:8 ratio. The eighth staff has a 9:8 ratio, a 9:8 ratio, a 9:8 ratio, and a 7:4 ratio. The ninth staff includes a 5:4 ratio. The notation is written in a single melodic line with various note values, rests, and dynamic markings.